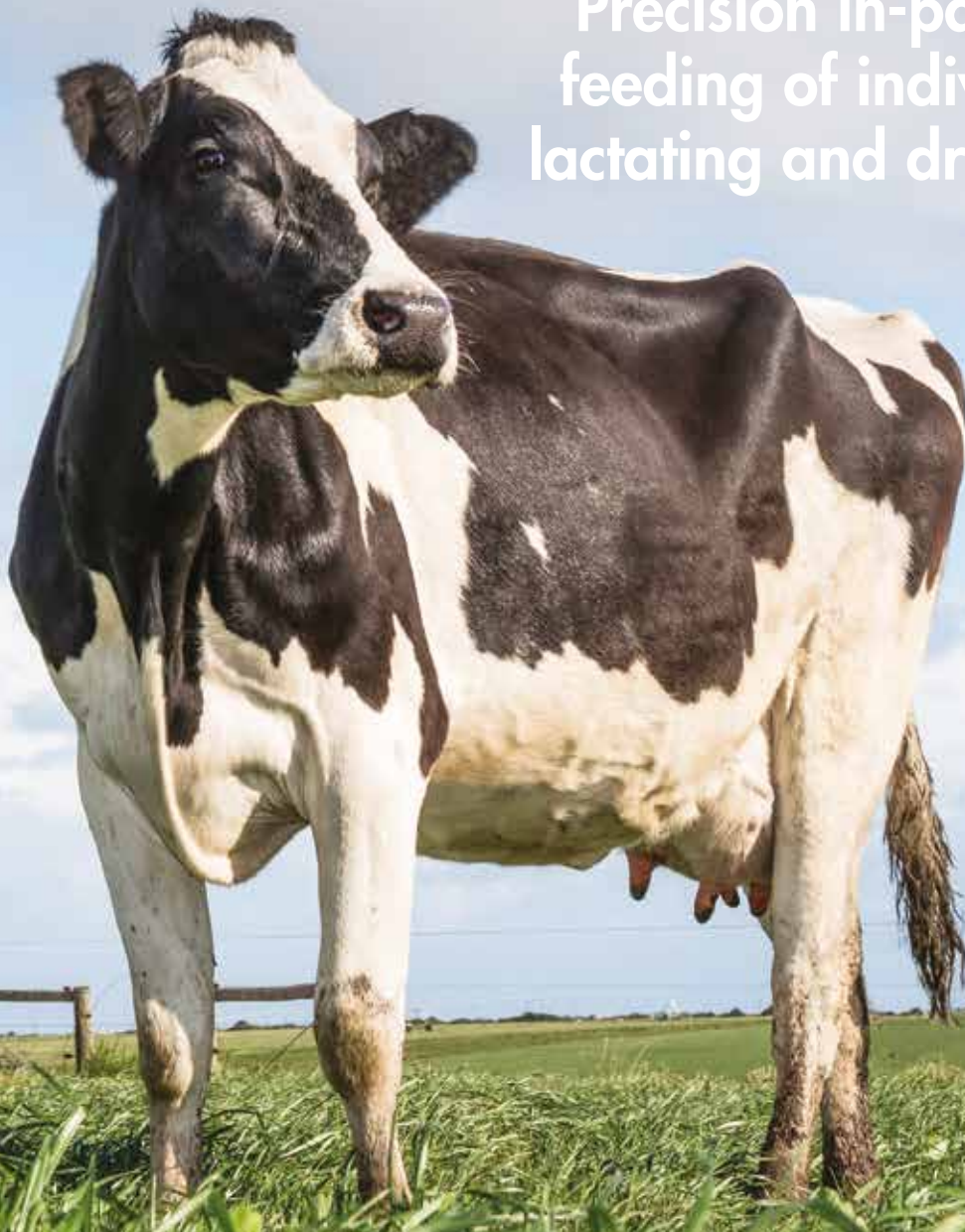


AFGRI

FRACTIONATED FEEDING PROGRAM



Precision in-parlour
feeding of individual
lactating and dry cows



**DRIVING INNOVATION
THROUGH SCIENCE**



The AFGRI Fractionated Feeding program for precision in-parlour feeding of individual cows is the most efficient precision feeding program currently available.

The program is a significant update on the Ideal Weight feeding model within Afifarm. This program is now available to AFGRI customers with Afifarm or Alpro at no extra cost, but with all the great benefits.

We address both nutrition and feeding requirements with great accuracy and a remarkably low management burden, resulting in improved efficiency of concentrate usage and thus resulting in greatly increased profitability.



Primary Objectives:

- To ensure cows do not lose excessive condition post calving, resulting in improved fertility and less metabolic disease problems.
- To dry all cows off with a perfect body condition score of 3.5 to ensure the foundation is set for a good start to the following lactation but at the same time ensuring maximum pasture usage in the case of pasture farms.
- This is achieved by tailoring supplementary concentrate feeding, of 1 or more feeds, to each individual cow's exact nutritional requirements, irrespective of breed or lactation and so optimise both milk and solids production. Nutritionally set maximum levels, as a percentage of each individual cow's Body Condition Score Corrected Weight within the program, will ensure that concentrate is not supplied at harmful levels.

Program features:

- Regular relevant reporting and the use of specific preset targets and benchmarks help to fine-tune dairy feeding and BCS management.
- NEW specifically designed FRESH COW products, dairy meals, energy-, protein- and mineral blends, are balanced for precision nutrition and efficiency per individual cow in the parlour.
- Feeding to meet individual cow net nutrient requirements and not purely CP and energy.
- One product or several products in different ratios can be fed in either rotary or swing over parlours.
- A team of experts with a passion for precision technology who use the highest level of technology, such as the AMTS.Cattle.Pro model, to ensure continuous improvement of the efficiency of the feeding of your cows as well as on-farm support. Data is not only on the

- customers' computer but also in a secure cloud and will be analysed on an ongoing basis to ensure targets set are feasible and strived for.
- EASILY SET
 - » Groups receiving no parlour feeding
 - » Ratio and level of Energy:Protein fractions to meet growth, body condition and milk production targets on parity

The precision fractionated feeding system takes into account

- BCS and target BCS
- Average and daily milk production levels
- Average and daily weight levels
- Parity
- Days In Milk
- Fertility status
- Weight growth targets from calving to dry up
- Mature body weight target
- Milk production as a percentage of body weight (m/w) as well as peak levels and days to peak level, persistency of lactation as well as the ratios of each per lactation.
- Concentrate as a percentage of body weight (c/w) and target c/w to precision feed animals on a % of body weight with a detailed feed menu.

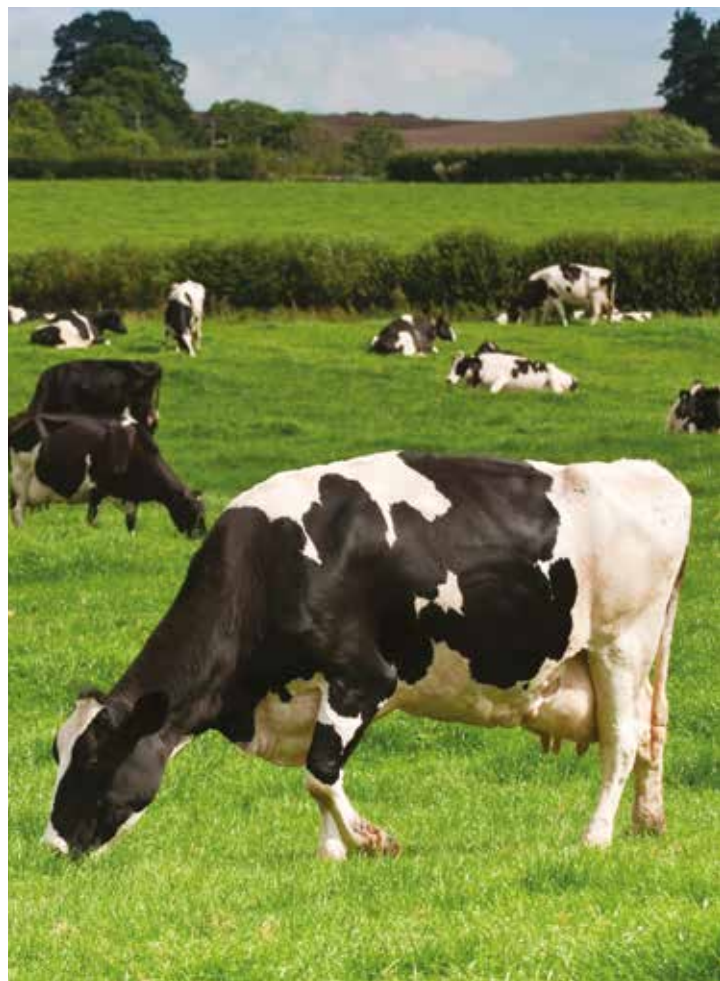


Benefits from this precision feeding

At least 1% of TMR herd to produce 10% milk as % of body weight
 At least 1% of pasture herd to produce 8% milk as % of body weight

And even better as illustrated ...

Index	Gyn. status	Lact. no.	m/w10	m/w20	m/w 30	m/w 50	m/w 70
1	Pregnant	2	9.31	11.36	12.09	12.25	11.55
2	Pregnant	3	9.37	11.34	12.05	11.48	10.84
3	Inseminatio	2	8.96	10.74	11.29	12.86	11.25
4	Inseminatio	2	9.87	11.17	11.28	9.98	10.29
5	Pregnant	3	7.51	10.25	11.10	11.80	11.29
6	Pregnant	2	8.44	10.38	11.07	11.39	11.28
7	Pregnant	4	7.92	9.89	11.07	10.94	10.59
8	Pregnant	2	7.75	9.40	10.87	11.49	12.19
9	Pregnant	2	8.45	9.95	10.84	10.70	10.97
10	Pregnant	4	7.25	9.32	10.84	10.95	10.85
11	Pregnant	5	8.48	9.42	10.77	10.65	10.07
12	(PD-) Inseminatio	2	7.73	10.44	10.72	10.94	10.28
13	(PD-) Inseminatio	2	7.68	9.35	10.65	10.70	12.01
14	Inseminatio	3	8.23	8.65	10.56	11.34	10.58
15	Pregnant	2	7.31	9.94	10.54	11.28	10.56
16	Pregnant	4	7.89	9.15	10.39	9.38	10.95
17	(PD-) Inseminatio	2	7.88	9.99	10.32	10.39	10.46
18	Inseminatio	1	6.82	8.49	10.27	10.95	10.32
19	Pregnant	2	8.28	9.71	10.27	10.84	10.73
20	Pregnant	2	7.62	9.29	10.24	7.65	10.48
21	Pregnant	2	8.00	8.92	10.24	10.19	10.30
22	Pregnant	2	8.39	9.57	10.20	10.79	10.69
23	Pregnant	3	8.16	8.01	10.17	11.51	10.91
24	Pregnant	2	7.92	9.69	10.16	10.86	10.49
25	Pregnant	2	8.27	9.35	10.12	10.40	9.99
26	Pregnant	2	8.19	9.53	10.12	10.27	9.21
27	Pregnant	2	7.88	9.04	10.07	11.00	10.82
28	Inseminatio	2	7.72	9.74	10.07	10.05	10.80
29	Pregnant	2	6.94	9.02	10.07	10.48	10.48
30	Pregnant	2	6.46	8.87	10.00	10.33	10.08
Total	--	--	240.67	289.96	318.45	323.82	321.29
Avg.	--	--	8.02	9.67	10.62	10.79	10.71

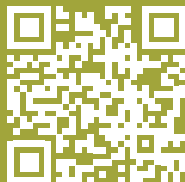


- << • Cows are fed FOR milk production and not as a result of milk production
- Cows are fed to minimize Negative Energy Balance and metabolic disease incidence
- Improved reproduction and embryo quality to ensure offspring reach full genetic potential
- Improved milk production as % of body weight and increased lactation persistency
- Better control on waste of expensive dairy meals
- Improved growth and body condition management and correct BCS at dry off
- Improved profitability

Regular Management Actions

- Ensure each cow is fed on a daily basis according to the automatic feed allocation from the program
- Accurately body condition score cows at calving and at dry off
- React to the program's report which will indicate outlier data infrequently and only when input is needed.
- Ensure initial weight data contains no outlier data
- Ensure pregnancy diagnosis is done early enough in lactation
- Ensure initial calibration of feeders with confirmation that concentrates are accurately being fed at least twice per load delivered.
- Code a sick or mastitis cow so as to ensure that her concentrate levels do not reduce while production reduces
- Once per week peruse benchmarking report generated daily by the system





Contact us:

+ 27 11 063 2347 | www.afgri.co.za
12 Byls Bridge Boulevard | Highveld Ext 73 | Centurion | 0046

**Afifarm is a registered trademark of SAE Afikim, Israel and Alpro is a registered trademark of De Laval, Sweden.*